



User Guide

DF01D




MOTOROLA

Congratulations

DROID™ by Motorola

DROID by Motorola gives you a premium browsing and messaging experience with the very latest from Google™, all in a thin touch QWERTY slider.

- **Browsing.** Get more from the Web, with a huge screen and full HTML. Search, browse, everything you want to do, all made easier.
- Maps, entertainment, and more. The latest technology and apps. Google Maps™ to find your way. YouTube™ to stay entertained. Easy access to Google and thousands of Android applications to expand your world.

Caution: Before assembling, charging or using your phone for the first time, please read the important legal and safety information packaged with your phone. Once your phone is up and running, touch Menu  > **Settings** > **About phone** > **Safety information** to read the full information.

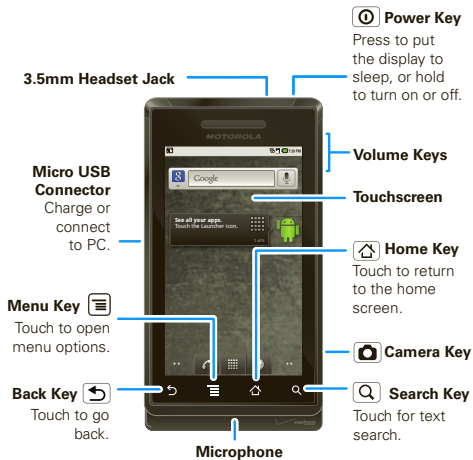
More information

On your computer—Go to <http://www.motorola.com/support/droid>.

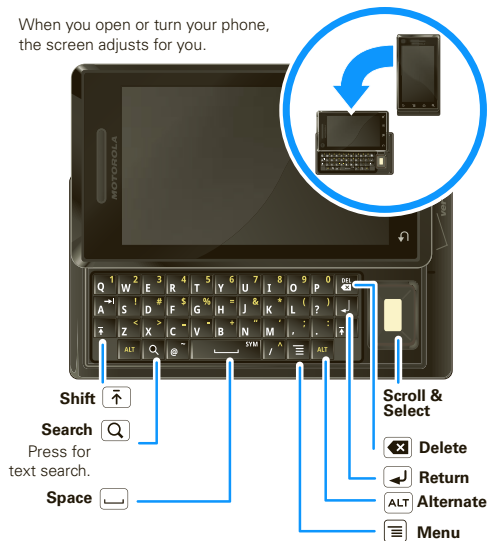
So, whether you want to read, watch, or play, we can help.

Your phone

the important keys & connectors



When you open or turn your phone, the screen adjusts for you.



Contents

Let's go	3
Touchscreen & keys	4
Home screen	7
Calls	9
Web	12
Google Maps™	13
Latitude	15
YouTube™	16
Apps for all	18
Manage your life	19
Contacts	22
Messaging	24
Text entry	26
Tips & tricks	27
Personalize	28
Photos & videos	30
Music	33
Bluetooth® wireless	37
Wi-Fi®	39
USB & memory card	40
Tools	41
Management	41
Security	42
Troubleshooting	43
Safety, Regulatory & Legal	44

Let's go

let's get you up and running

Assemble & charge

- 1 MicroSD in (may already be inserted)
- 2 Battery in



- 3 Cover on



- 4 Charge up



Note: Your device is always on when being charged.

Caution: Please read “Battery Use & Safety” on page 44.

Set up & go

The first time you turn on your phone, a setup wizard guides you through signing in to your existing Google™ account. If you don't have a Google account, you can create one using the wizard.

Tip: Remember to write down your user name and password, and keep them in a safe place.

Turn it on & off

To turn on your phone, press and hold Power (⏻) (on top of the phone).



To turn off your phone, press and hold Power (⏻), then touch **Power off** on the screen.

Wi-Fi® connect

If you want to use a Wi-Fi network for even faster Internet access, touch Menu (☰) > **Settings** > **Wireless & networks** > **Wi-Fi settings**.

Cool content & more

Browse and download thousands of the coolest apps on the planet from Android Market™.

Your phone comes with a microSD memory card installed—you can load it up with photos, videos, and music from your computer using “USB drag & drop” on page 40.

Touchscreen & keys

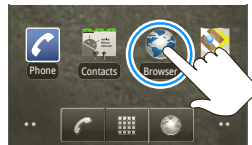
a few essentials

Touch tips

Here are some tips on how to navigate around your phone.

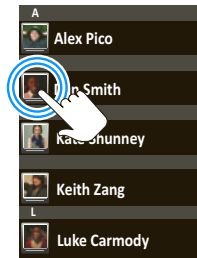
Touch

To choose an icon or option, *touch* it.




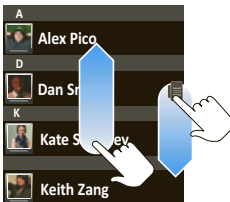
Touch & hold

To open special options, *touch and hold* an icon or other item. Try it: In the home screen, touch **Contacts**, then touch and hold a contact to open options.



Drag

To scroll through a list or move slowly, *drag* across the touchscreen. Try it: In the home screen, touch  **Contacts**, then drag your **Contacts** list up or down.



Tip: When you drag or flick a list, a *scroll bar* appears on the right. Drag the scroll bar to move the list to a letter A - Z.

Flick

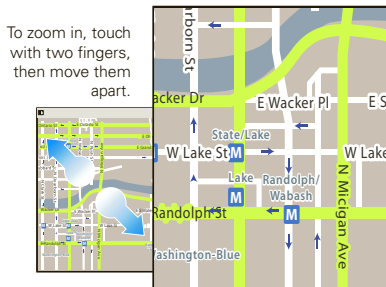
To scroll through a list or move quickly, *flick* across the touchscreen (drag quickly and release).

Tip: When you flick a long list, touch the screen to stop it from scrolling.

Zoom

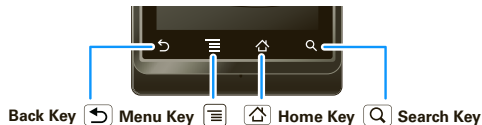
Get a closer look at maps or web pages. To zoom in, *double-touch* the screen. To zoom out, *double touch* the screen again.


You can also zoom in or out by moving your fingers apart or pinching your fingers together on the screen.





Key tips



Menu, home, & back





Touch Home  to close any menu or app and return to the home screen. In the home screen, touch and

hold Home  to show the last few apps you used, then touch an app to open it.


Touch Search  for text search, or touch and hold for voice search.



Touch Menu  to open menu options, or touch Back  to go back.

Sleep & wake up


To save your battery, prevent accidental touches, or when you want to wipe smudges off your touchscreen, put the touchscreen to sleep by pressing Power . To wake up the touchscreen, just press Power  again, or open the phone.



To change how long your phone waits before the screen goes to sleep automatically, touch Menu  > **Settings** > **Display** > **Screen timeout**.

Tip: To make the screen lock when it goes to sleep, use “Screen lock” on page 42. To unlock the screen, press Power  or open the phone. Then, drag  to the right.

Power key menu

Press and hold Power  to open the power key menu, where you can turn off the phone (**Power off**), or turn **Airplane mode** or **Silent mode** on or off.

Adjust volume

Press the volume keys to change the ring volume (in the home screen), or the earpiece volume (during a call).



Rotate the screen


When you rotate the phone 90 degrees counterclockwise, the touchscreen can rotate to stay right-side up:

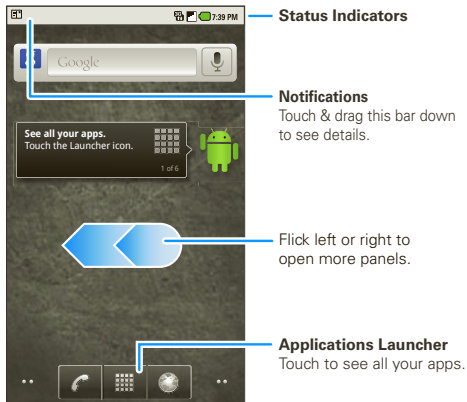
Find it: Menu  > **Settings** > **Display** > **Orientation**

Home screen

quick access to the things you need most

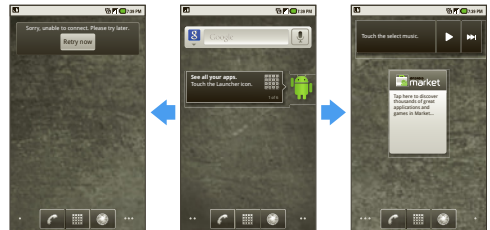
Quick start: Home screen

The *home screen* gives you all your latest information in one place. It's what you see when you turn on the phone or touch Home  from a menu. It's basically like this:




Note: Your home screen might look a little different.

The home screen extends beyond what you see on the screen to give you more room for adding shortcuts, widgets, and more. Flick the home screen left and right to see more panels or to add widgets or shortcuts.




Widgets

Add a *widget*, such as a clock, music player, or a calendar that shows upcoming appointments.

To open a widget, touch it. To add widgets, touch Menu  > **Add > Widgets**. If your home screen is full, you won't see the add option. You'll have to delete widgets or shortcuts to make room.

Note: If you install apps from Android Market that have widgets, touch and hold the home screen, then select a widget to add to the home screen.

Shortcuts


To add shortcuts to the home screen, open the app menu (see below), then touch and hold the shortcut you want. It will be added to the home screen. Or, touch Menu  > **Add > Shortcuts**.

Apps

Your phone comes with some apps already, and you can download and install more. To open an app, touch it.

App menu


All the apps on your phone, including the apps that came with your phone, and the ones you download and install, are listed in alphabetical order in your *app (application) menu*.


To open the app menu, touch .





Running multiple apps

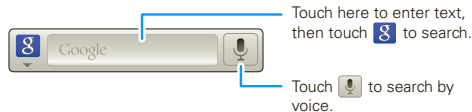
No need to close an app before opening another one. Your phone runs multiple apps, all at once.

You can open a new app while already running another. Touch Home  to return to the home screen. Open the app menu and touch the app you want. To switch

from one running app to another, touch and hold Home  to see what apps are already open, then touch the one you want. You can view up to the last six apps that you ran.

Search

Touch Search  on the front of the phone, or touch Search  on the QWERTY keypad.




















Phone status & notifications

The status bar at the top of the screen contains icons that tell you about messages and phone status. To view your notifications, touch the status bar and drag it down.



Icons on the right tell you about phone status:

	Bluetooth® active		network (full signal)
	GPS active		network (roaming)
	Wi-Fi® active		downloading
	volume		voicemail message
	vibrate		3G (fastest data)
	silent		flight mode
	mute call		battery (charging)
	battery (full charge)		speakerphone active
	alarm set		

Tip: To see today's date, touch and hold the status bar at the top of the screen.

Calls

it's good to talk

Quick start: Calls

Dialing options

Find it:  Phone



Contacts

Touch to open, then touch an entry to call.

Recent Calls

Touch to open, then touch an entry to call.

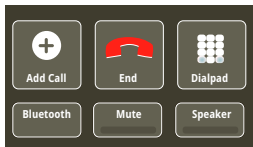
Call

Enter a phone number & touch here to call it.

In-call options


During a call:

- To use a Bluetooth® device, touch **Bluetooth**. (The device must be turned on and previously paired—see “Connect new devices” on page 38.)



- To mute a call, touch **Mute**.
- To use the speakerphone, touch **Speaker**.

Note: Using a mobile device or accessory while driving may cause distraction and may be illegal. Always obey the laws and drive safely.

Tip: You can touch Home  or Back  to leave the active call display. To reopen it, touch Home  >  **Phone** > **Return to call in progress**.

Make & answer calls

To make a call, touch  **Phone**, enter a number, then touch .

Tip: If the screen is locked, drag  to the right.

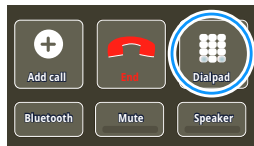
To answer a call, drag  to the right.

To end a call, touch **End**.

To ignore a call, drag  to the left.


Enter numbers during a call

To enter numbers during a call, touch **Dialpad**.



Recent calls

Find it:  **Phone** > **Call log**

- To call a number, touch it.
- To send a text message, create a contact, view a contact, or other options, touch and hold an entry.
- To clear the list, touch Menu  > **Clear call log**


Frequent calls

Find it:  **Phone** > **Favorites**


- To call a number, touch it.
- To send a text message, view a contact, or other options, touch and hold an entry.

Conference calls

To start a conference call, call the first number. After they answer, touch **Add call** and call the next number. When the next number answers, touch **Merge call**.



Tip: Before merging, you can switch back and forth between the two calls by touching .

Your phone number

Find it: Menu  > **Settings** > **About phone**
> **Status** > **My phone number**

Emergency calls

Note: Your service provider programs one or more emergency phone numbers (such as 911 or 112) that you can call under any circumstances, even when your phone is locked. Emergency numbers vary by country. Your pre-programmed emergency number(s) may not work in all locations, and sometimes an emergency call cannot be placed due to network, environmental, or interference issues.

- 1 Touch  **Phone** (if your phone is locked, touch **Emergency Call**).
- 2 Enter the emergency number.
- 3 Touch  to call the emergency number.

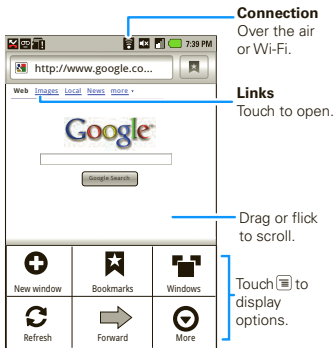
Note: Your mobile device can use AGPS satellite signals to help emergency services find you (“GPS & AGPS” on page 49).

Web

you don't need a PC, surf the web with your phone

Quick start: Browser

Find it:  **Browser**




Note: If you can't connect, contact your service provider.

Connect

Your phone uses the mobile phone network (over the air) to connect to the Web automatically.

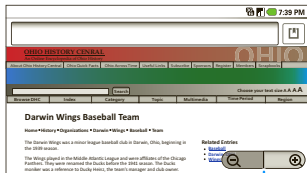
Note: Your service provider may charge to surf the Web or download data.

To use a wireless network, touch Menu  > **Settings** > **Wireless & networks**. Touch **Wi-Fi** to turn it on and touch **Wi-Fi settings** to search for nearby wireless networks. Touch a network to connect.

Web touch tips

Zoom & magnify

In Web pages, when you scroll (drag or flick), zoom icons appear at the bottom of your screen.




Zoom In/Out

Select links

When you touch a link, your phone outlines it and goes to that page. If you touch and hold the link, your phone shows options, like **Open in new window** or **Bookmark link**.



Browser options

Touch Menu  to see browser options:

options	
Open	Open a new browser window.
Bookmarks	See your bookmarks.
Windows	View the browser windows that are currently open.
Refresh	Reloads the current page.
Back/Forward	Navigate to previously viewed pages.
More	Shows additional browser options.

Google Maps™

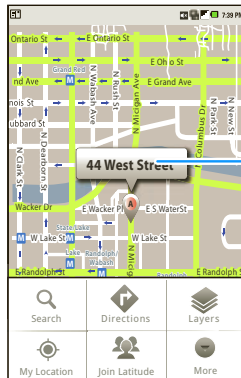
where you are, where you're going

Note: This feature is not available in all areas. Check with your service provider.

Quick start: Google Maps

Where am I? Where do I want to go? Don't worry—let Google Maps™ find out for you.

Find it:  **Maps**



Map View

Drag or flick to scroll.
Touch to show zoom.

Touch  to show options.

Google Maps™ opens by default in “Map mode.” To learn more about the different map modes, go to “Select map mode” on page 14.



Set your location sources

Set your phone to determine your location using GPS satellite signals (highly accurate, but uses battery power) or using the mobile network (less accurate, but conserves battery power).


To set your location, touch Menu  > **Settings** > **Location & security** > **Use GPS satellites** and/or **Use wireless networks**.


Find your location

Note: Don't forget to set your location sources.

From the main Map screen, touch Menu  > **My Location**. Your location is shown on the map as . The bigger the circle, the less accurate the location.

Find any location

1 Touch Menu  > **Search**.

2 Enter text in the search box, like an address, business, or city, then touch .


Tip: If it's an address you have visited before, select from the list shown.

3 Touch the search box to view all the results, then touch the one you want.


Get directions

1 Touch Menu  > **Directions**.


2 Enter a starting point address or touch  and select **My current location**, **Contacts**, or **Points on map**.

3 Enter an end point address or touch  and select **Contacts** or **Points on map**.

4 Select your mode of transport (car, public transport or walk), then touch **Go**. Your directions are shown as a list. To view your directions on a map, touch **Show on map**.

5 When you have finished, touch Menu  > **More** > **Clear map**.

Select map mode

Touch Menu  > **Layers** to select from **Traffic**, **Satellite**, **Latitude** or recent searches, viewed positions or directions.

Touch Menu  > **Layers** > **More layers** to select from **My Maps**, **Wikipedia**, or **Transit Lines**.

Touch **Clear Map** to clear your selections.

Map view

Shows a map, complete with names of streets, rivers, lakes, mountains, and borders. This is the default view.

Satellite view

Shows map on top of aerial photo.

Traffic view

If available in your area, real-time traffic conditions are shown on the roads as color-coded lines.


Latitude

where are your friends & family?

Note: This feature is not available in all areas. Check with your service provider.

Join Latitude


See where your friends and family are on Google Maps™. Plan to meet up, check that your parents got home safely, or just stay in touch.

Don't worry, your location is not shared unless you agree to it. You need to join Latitude, and then invite your friends to view your location or accept their invitations. When using Google Maps, touch Menu  > **Join Latitude**. Read the privacy policy and if you agree with it, touch **Agree & share**.

Add & remove friends

Find it:  **Maps** > Menu  > **Latitude**

To add friends:

- 1 Touch Menu  > **Add friends**.
- 2 Touch **Select from Contacts** or **Add via email address**, then touch a contact > **Add friends**.

If your friends already use Latitude, they'll receive an email request and a notification. If they have not yet joined Latitude, they'll receive an email request that

invites them to sign in to Latitude with their Google account.

To remove friends:



- 1 Touch Menu  > **Latitude** to show your friend's list, then touch a friend in your list.
- 2 Touch **Remove**.

Share location



When you receive a request to share location details you can choose to:

- **Accept and share back**—see your friend's location, and your friend can see yours.
- **Accept, but hide my location**—see your friend's location, but they can't see yours.
- **Don't accept**—location information is not shared between you and your friend.

Hide your location

Touch Menu  > **Latitude** to show your friend's list. Touch your contact name, then touch Menu  > **Privacy** > **Hide your location**.

Turn off Latitude


Touch Menu  > **Latitude** to show your friend's list. Touch Menu  > **Privacy** > **Turn off Latitude**.

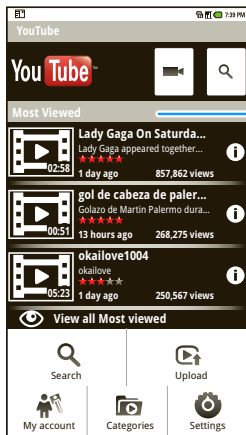
YouTube™

go and create your own classic

Quick start: YouTube


Post that great video you've taken and see how many hits you get.

Find it:  >  **YouTube**



Categories


Touch a video to play.

Touch  to show options.


YouTube user-generated content web site lets you share videos with YouTube users everywhere. You don't need a YouTube account to browse and view videos.

Note: If you don't have a YouTube account, visit <http://www.youtube.com> to find out more. To create an account or sign in, go to "Your account" on page 17.

Watch videos

See popular video categories, like Most viewed, Most discussed and Most recent. Touch a category, then touch the video to start playing it. To see more video categories, touch Menu  > **Categories**. To see a video in high quality, touch **HQ**.


Search for videos

Find it: Menu  > **Search**

Enter text, then touch . To clear your search history, touch Menu  > **Settings** > **Clear search history**.

Share videos

Send someone a link to a video that you are watching.

- 1 Touch Menu  > **Share**.
- 2 Address and complete your email, then touch **Send**.

Your account

Log in or create account


Find it: Menu  > **My account**

- 1 To create your YouTube account, touch the "Don't have a YouTube account? Click **here** to create one" link.

If you already have a YouTube account, enter your user name and password, and touch **Sign in**.

- 2 For a new account, enter a user name, complete the fields, then touch **I accept**.

Upload videos

Find it: Menu  > **Upload**

- 1 Touch the video you want to upload. You can change the video title, description, set the access, and add tags.
- 2 Touch **Upload**.


Apps for all

get the app you want

Android Market™

Note: You must set up a Gmail account (see “Gmail” on page 19) in order to buy and download apps from the Android Market.

Find it: 🏠 **Market**

Get all the fun games and cool apps you want! Market provides you with access to software developers everywhere, so you can find the app you want. If you need help or have questions about Android Market, touch Menu  > **Help**.


Browse & install apps

Scroll to and touch the app you want to install. Then, touch **Install** (if app is free) or **Buy**.


Warning: If an app you are downloading requires access to your data or control of functions on your phone, you'll be asked to give your permission. After selecting **Install**, the app will download. After selecting **Buy**, you may be asked to sign in to an additional Google™ account. Sign in and select **Purchase now** to proceed. Follow the on-screen instructions. To see the download progress, open the notifications window.

After you download an app, the icon for that app appears on the app menu (see “Apps” on page 8).

Manage & restore apps

To manage your apps, from your phone's home screen touch Menu  > **Settings > Applications > Manage applications**.

Touch the app to open the details screen—from here you can review, uninstall, and more.

To reinstall any downloaded items, touch 🏠 **Market**, then touch Menu  > **Download**. All previously installed apps are listed and available for download.

Important customer information

Please be advised that many services and applications offered through this unique device are provided by Google™ and various application developers. If you use, link to, or download a Google service, or an application such as a non-Verizon Wireless location-based GPS type service, chat room, marketplace, or social network, from this device, you should carefully review the terms of such service or application. If you use any of these non-Verizon Wireless services or applications, personal information you submit may be read, collected, or used by the service or application provider and/or other users of those forums.

Motorola Mobility, Inc., and Verizon Wireless are not responsible for your use of those applications or information you choose to submit or share with others. Specific terms and conditions, terms of use, and privacy policies apply to those applications and services. Please review carefully any and all terms and conditions applicable to those applications and services including those related to any location-based services for any particular privacy policies, risks, or waivers.

Your Verizon Wireless customer agreement terms and conditions and certain other specifically identified terms govern your use of any Verizon Wireless products and services.

Manage your life

stay on top of things

What can you manage?

Email, contacts, and calendar on your phone give you access to the same personal information that you add, view, and edit on your computer with the use of Microsoft™ Outlook™.

You can:


- View Google™, Facebook, and Exchange contacts in one list.
- Schedule and respond to meeting requests.

Gmail



Create a new email

Find it:  >  **Gmail** >  Menu > **Compose**


Enter the recipient email address and message, then touch **Send**.


Tip: Touch Menu  for options, like **Attach** or **Add Cc/Bcc**.

Tips

- To **search** in Gmail for messages, touch Menu  > **Search**.
- To **set new email notifications**, such as having a special sound play when you receive a message, touch Menu  > **Settings** > **Email notifications**, then select the ringtone and vibrate options.
- To label an email thread, touch and hold a message, then touch **Change labels**.

Shortcuts



To **refresh list**, touch Menu  + **U**.


To **compose new**, touch Menu  + **C**.

To **open conversation**, press Enter.

To **archive conversation**, touch Menu  + **Y**.

To **jump to top of list**, press Alternate  +  **up**.

To **jump to end of list**, press Alternate  +  **down**.

To **page up**, press Shift  + **spacebar**.

To **page down**, press spacebar.

Email

Set up an account

Find it:  >  **Email**


The email setup wizard will guide you through setting up your email account.

Tip: To get your Microsoft Outlook mail on your mobile phone, see “Synchronize with Microsoft™ Office Outlook™” on page 21.

Create a new email


Find it:  >  **Email** >  Menu > **Compose**

Enter the recipient email address and message, then touch **Send**.


Tip: Touch Menu  for options, like **Attach** or Add Cc/Bcc.

Calendar

Find it:  >  **Calendar**

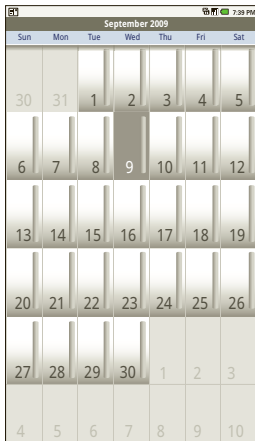
You can manage your personal life on the Google calendar and your business affairs on the Corporate calendar. View a calendar in different ways: Touch Menu  > **Agenda**, **Day**, or **Week**. When you highlight an event in the day and week views, more details appear.

Add calendar events

From any calendar view, touch Menu  > **New event**. Enter event details and touch **Done**.

Manage calendar events

To edit an event, touch and hold the event, then touch **Edit event**. Edit event details, then when you're done, touch **Done**.



Google data synchronization

Find it: Menu  > **Settings** > **Accounts & sync**

The Google apps on your phone give you access to the same personal information (emails, events, and contacts) that you have on a computer using Gmail, Calendar, and Contacts. It's easy to synchronize the Google apps information you want to keep up to date.

Select apps to synchronize

1 Touch **Background data**.

Tip: To save battery power do not touch **Background data**.

2 Touch **Add account** to add the apps you want to synchronize, like **Google**, **Facebook**, or **Corporate**.

Synchronize with Microsoft™ Office Outlook™

If you use Microsoft™ Office Outlook™ on your work computer, your phone can synchronize emails, and events with your Microsoft™ Exchange server.

Find it: Menu  > **Settings** > **Accounts & sync** > **Add account** > **Corporate**

1 Enter your user name (username@company.com), password, email address, and server details including domain name and security type (server

address is the same URL you use to access your company's email using the Web on your computer).

Note: Contact your business IT department for server details.

- 2 Touch **Next**.
- 3 Set up your sync options: select email, contacts, or calendar.
- 4 Touch **Save & sync**.

Corporate calendar

Find it:  > **Corporate Calendar**

Corporate calendar appointments are shown in a separate calendar from Gmail calendar appointments. Once you have configured your corporate account, you can start the Corporate calendar app to view, add, and manage your corporate calendar appointments.

Corporate directory

Find it:  > **Corporate Directory**

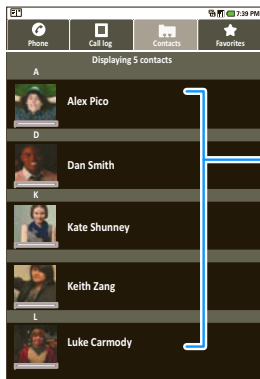
After you configure your corporate account, you can start the **Corporate Directory** app to search corporate directory details by specifying a user's name or email address. You can then easily call, text, or email the user.

Contacts

contacts like you've never had before

Quick start: Contacts

Find it:  **Contacts**




Contacts List

Touch to view contact information. Touch & hold to edit, delete, & more.

Menu Options

Touch Menu  to edit sync groups or to add/import new contacts.

Tip: To search the list, just open your phone and type a name, or simply touch Search  and type using the touchscreen keypad. When you flick or drag this list, a scroll bar appears on the right. Drag the scroll bar to move the list faster.

Sync with Facebook friends

When you first log onto Facebook from your phone, you will be prompted to sync your phone's contacts with your Facebook friends' profiles, including profile pictures. You can sync with just people in your phone's contacts, with your entire Facebook list, or you can choose not to sync.


Call, text, or email contacts

Find it:  **Contacts**

For **View contact**, **Call contact**, **Text contact**, **Add to favorites**, or other options, touch and hold the contact.

Edit or delete contacts

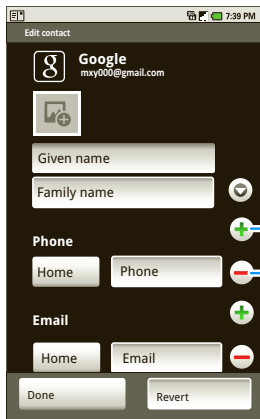
Find it:  **Contacts**

Touch the contact, then touch Menu  > **Edit contact** or **Delete contact**.

Create contacts


Find it:  **Contacts** > Menu  > **New contact**

Select the account to save the contact to, then type the contact name and details.



When you're finished, touch **Done**.

Groups

Find it:  **Contacts** > Menu  > **Display options**

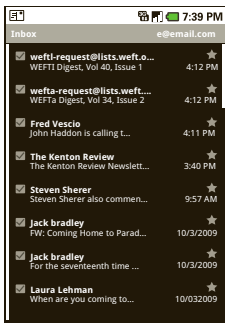
You can put your **Contacts** into groups that you create (like "friends," "family," or "work"). Then, you can find contacts faster by showing one group at a time.

Messaging

sometimes it's best 2 text, or IM, or email . . .

Quick start: Messaging

Find it:  **Messaging**



Message List

Touch to open a message.
Touch & hold to move,
delete, & more.


Tip: To see more messages, flick or drag up.

Read & reply to messages


- To open a message and all of its replies, touch it.
- To respond to a message, just open it and enter your response in the text box at the bottom.
- To open options, touch and hold a message.

Create messages

Find it:  **Messaging** > **New message**

Enter the recipient and message. In text messages and emails, touch Menu  for options, like **Insert smiley** or **Attach**.

Send & receive attachments

To send a file in a message, open a new message and touch Menu  > **Attach**.

When you receive a message with an attachment, open the message and touch the file name to download it. Then, touch the name again to open it. Some file formats can be converted to HTML for faster viewing, and your phone will show a button that says **Get HTML version**.

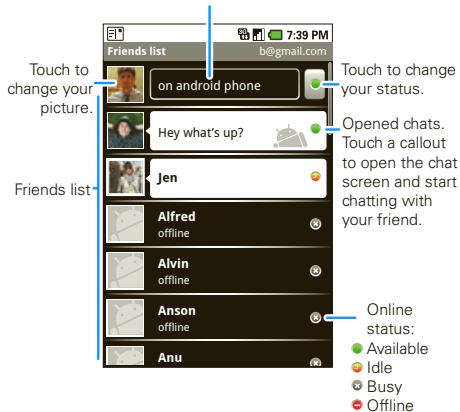
Tip: To send and receive large attachments faster, use a Wi-Fi® connection (see “Wi-Fi®” on page 39).


Google Talk™

Google Talk instant messaging lets you chat with other Google Talk users on phones or on the web.

Find it: > Talk



Touch to change your online status message.



Touch Menu  to see a list of your Google Talk friends, send invitations to add new friends, and much more.




Instant messages

To send and receive instant messages, you can use an instant messaging app (such as Google Talk™) or your browser.

- To download and use an instant messaging app, touch  **Market** > **Apps** > **Communication**, then choose an app for your provider. Once you download the app, you'll see it on the app menu (see "Apps" on page 8).
- If you don't see an app for your IM provider, you can use your Web browser. Touch  **Browser**, then enter your provider's Web site and touch **Go**. Once you're there, follow the link to sign in.

Note: Your IM options will depend on your IM provider. To browse instant messaging apps from your computer, go to <http://www.android.com/market>.

Voicemail

When you have a new voicemail,  shows at the top of your screen. To hear the voicemail, touch  **Phone**, then touch and hold .

Text entry

think keyboard, now think smaller

Typing tips

Here are some tips for using your phone's keypad:

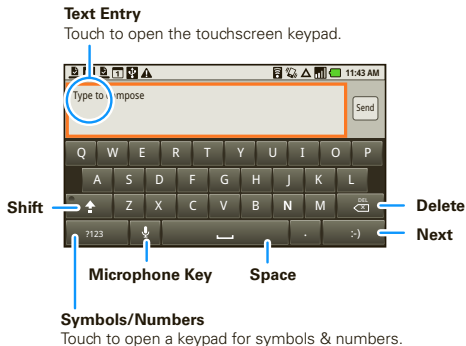
- To choose **symbols** from a list, press Alternate **[ALT]** > Symbols **[SYM]**.
- To enter **alternate** characters in the corners of keys, press Alternate **[ALT]**.
- To enter **several alternate** characters until you press Alternate **[ALT]** again, press Alternate **[ALT]** twice.
- To enter **one capital** letter, press Shift **[⇧]**.
- Enter **only capital** letters, until you press Shift **[⇧]** again, press Shift **[⇧]** twice.
- To **select** text, press and hold Shift **[⇧]**, then press **[←]** left or right.
- To **cut** or **copy** selected text, touch and hold text > **Cut** or **Copy**.
- To **paste** cut or copied text, touch and hold > **Paste**
- To **delete** a character (hold to delete more), press Delete **[X]**.
- To **delete** the current line, press Alternate **[ALT]**+ Delete **[X]**.


- To **jump** to the beginning/end of a line, press Alternate **[ALT]**+ Scroll **[↔]**.
- To start a **new line** (email), press Return **[↵]**.


To change text entry settings, change languages, and see the dictionary of terms you've used, from the home screen, touch Menu **[☰]** > **Settings** > **Language & keyboard**.

Touchscreen keypad

When your phone is closed, you can open a display keypad by touching a text field. To close the keypad, touch Back **[↶]**.



Tip: Instead of entering text manually, you can touch the microphone key  and simply speak the words. Your phone will convert your spoken words to text. (May not apply to all apps that require text entry.)

Note: You must set **Orientation** to on to use this feature—touch Menu  > **Settings** > **Display** > **Orientation**.

To change your settings for this keypad, from the home screen, touch Menu  > **Settings** > **Language & keyboard** > **Android keyboard**.

Text entry settings

When you use the touchscreen keypad, your phone suggests words from your dictionary and chosen language. Your phone also automatically enters apostrophes in some words, like “dont.”













Find it: Menu  > **Settings** > **Language & keyboard**

- To change the language and style for your touchscreen keypad, touch **Select language**.
- To edit your dictionary, touch **User dictionary**.
- To change the sounds, correction, and other settings for your touchscreen keypad, touch **Android keyboard**.
- To change the automatic correction settings for your full keypad, touch **Device keyboard**.

Tips & tricks





a few handy hints

General tips

- To return to home screen, touch Home .
- To see recently dialed numbers, touch  **Phone** > **Call log**.
- To sleep/wake your phone, press Power .
- To set screen timeout, touch Menu  > **Settings** > **Display** > **Screen timeout**.
- To search, touch Search .
- To show last few apps, touch and hold Home .
- To turn sound on/off, press and hold Power  > **Silent mode**.
- To turn airplane mode on/off, press and hold Power  > **Airplane mode**.
- To go to the top of a list, press and hold Alternate  > Scroll  up.
- To go to the bottom of a list, press and hold Alternate  > Scroll  down.

Battery tips

Want to extend your battery life? Try these:

- To turn off automatic applications sync, touch Menu  > **Settings** > **Accounts & sync**.
- To turn off Bluetooth® power, touch Menu  > **Settings** > **Wireless & networks** > **Bluetooth**.
- To turn off Wi-Fi®, touch Menu  > **Settings** > **Wireless & networks** > **Wi-Fi**.
- To add a **Power Control** widget, touch Menu  > **Add** > **Widgets** > **Power Control**.

Note: The **Power Control** widget is a simple way to enable/disable Wi-Fi, Bluetooth® wireless, GPS, Sync (turns on/off all active accounts, Google, and Exchange), and display brightness.

Personalize

add your personal touch

Widgets

To create a new widget:

- 1 Find an empty spot on your home screen where you want to add a widget, then touch and hold.
Tip: You can flick left or right to open other panels on your home screen.
- 2 Touch **Widgets**.
- 3 Touch the type of widget. If necessary, enter the widget settings.

You can personalize widgets with content that you choose.

Ringtones

To personalize your ringtones:

Find it: Menu  > **Settings** > **Sound** > **Phone ringtone** or **Notification ringtone**

To set your vibrate options:




Find it: Menu  > **Settings** > **Sound** > **Phone vibrate**

Wallpaper


To apply a new wallpaper:

- 1 Find an empty spot on your home screen, then touch and hold.
- 2 Touch **Wallpapers**.
- 3 Touch **Gallery** to select a photo as your wallpaper, or touch **Live wallpapers** or **Wallpapers** to choose a wallpaper that comes with your phone.

Sounds


- To set volume for media and videos, touch Menu  > **Settings** > **Sound** > **Media volume**.
- To play tones when using dial pad, touch Menu  > **Settings** > **Sound** > **Audible touch tones**.
- To play sound on a screen selection, touch Menu  > **Settings** > **Sound** > **Audible selection**.



Display settings

- To set display brightness, touch Menu  > **Settings** > **Display** > **Brightness**.
- To set orientation, touch Menu  > **Settings** > **Display** > **Orientation**.
- To set animation, touch Menu  > **Settings** > **Display** > **Animation**.

Note: Some apps are designed so that your phone can “animate” them by rotating, fading, moving, and stretching one or more images.

Quick launch shortcuts


To set keyboard shortcuts to launch your favorite app, touch Menu  > **Settings** > **Applications** > **Quick launch** > **Assign application**.

To use a quick launch shortcut, touch Search  and the assigned key, like Search  and **B** to launch the browser.

You can also add shortcuts directly to the home screen for actions like **Direct dial** and **Direct message**. Just touch and hold an empty spot on the home screen, then touch **Shortcuts** and select a shortcut.

Language & region

Set your menu language and region:

Find it: Menu  > **Settings** > **Language & keyboard** > **Select language**

Photos & videos


see it, capture it, share it!

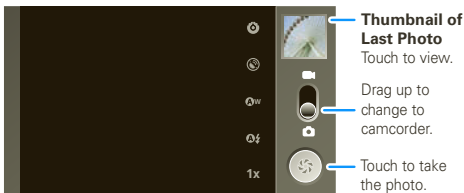
Photos

Take & share photos



Take that family photo, and post it online for everyone to see.

Note: To get the clearest photos, wipe the lens clean with a soft, dry cloth before you take a photo.

Find it: Press Camera 



Note: Photos are stored on your microSD memory card. **Picture Resolution** is 5MP, unless you change it.

To take the photo, touch and hold , or press Camera .

Note: When you turn on the camera you may hear a series of clicks as the autofocus motor initializes.

A thumbnail of the photo you've just taken is shown on the right. Touch the thumbnail to view it.

- To **set** the photo as a wallpaper or contact photo, touch **More > Set as**.
- To **send** the photo in a message or post it online, touch **Share**. For more info on sharing your photos, see "Share your photo gallery" on page 31.
- To **delete** the photo, touch **Delete**.
- For more options, touch **More**.

Photo options

Touch these options in the viewfinder screen to adjust camera settings:




options	
Store location	Save the latitude and longitude of where the photo was taken so the photo can be displayed on Google Maps or used in other applications.
White balance	Compensate for color differences in different lighting. Set to Auto or, for greater precision, set to Incandescent or Fluorescent for indoor lighting, or to Daylight or Cloudy for outdoor lighting.
Flash mode	Choose from Auto , On , and Off .

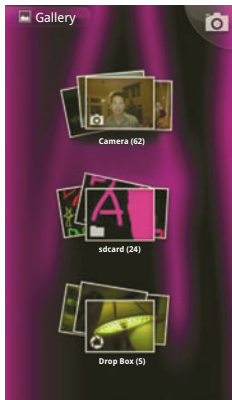
options	
Zoom	Set the zoom factor to 1X , 2X , 3X , or 4X .
Exposure	Set the exposure to 0 , +1 , or +2 .
Focus mode	Choose from Auto (for best overall image quality), Infinity , and Macro (for close-ups).

View your photos

Find it:  >  **Gallery** > **Camera**

Play a slideshow

Touch  >  **Gallery** > **Camera**, touch a photo, then touch **Slideshow** to start a slideshow. To stop the slideshow, touch the screen. To return to the gallery, touch Back .



Share your photo gallery

Find it:  >  **Gallery** > **Camera**

To send your photo in a message or post it online:

- 1 Touch and hold a photo, then touch **Share**.
- 2 Choose how you want to share—like **Bluetooth**, **Email**, or **Messaging**.

Manage your photos



Find it:  >  **Gallery** > **Camera**

Touch and hold a photo, then:

- To delete the photo, touch **Delete**.
- To set the photo as a contact picture or wallpaper, touch **More** > **Set as**.

Tip: To copy photos to/from a computer, go to “USB drag & drop” on page 40.

Edit your photos

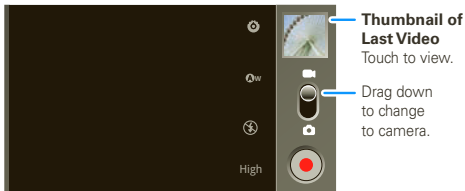
Touch  >  **Gallery** > **Camera**, touch & hold the photo, then select your edit option.

Videos

Record & share videos


Find it: Press Camera , then drag the switch up.

Note: To get the clearest videos, wipe the lens clean with a soft, dry cloth before you record a video.




Tip: To send your video in a message, set the video quality to low by touching **Video quality** > **MMS**.

To record the video, touch . Touch  to stop the video. Or, press Camera . To stop the video recording, press Camera  again.

A thumbnail of the video you've just taken is shown on the right. Touch the thumbnail, then touch Menu :

- To **send** the video in a message or post it online, touch **Share**. For more info on sharing your photos, see "Share your photo gallery" on page 31.



- To **play** the video, touch .
- To **delete** the video, touch **Delete**.

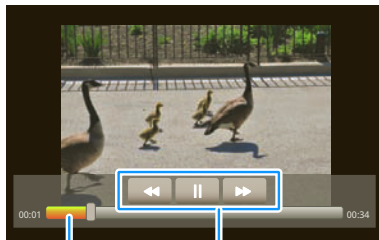
Video options

Touch these options in the viewfinder screen to adjust video settings:

options	
White balance	Compensate for color differences in different lighting. Set to Auto or, for greater precision, set to Incandescent or Fluorescent for indoor lighting or to Daylight or Cloudy for outdoor lighting.
Flash mode	Set to On or Off .
Video quality	Select Low if sending the video in an MMS message, High if storing the video on an SD card.
Color effect	Apply different color effects on videos. Choose Sepia for an "antique" look, Mono for black and white, Negative to invert the video image, Red Tint , Blue Tint , or Green Tint to apply tints to the video.

Play your videos

Find it:  >  **Gallery** > **Camera** > *select_video*



Progress Bar

Video Controls

Note: To see the controls while the video is playing, touch the display.

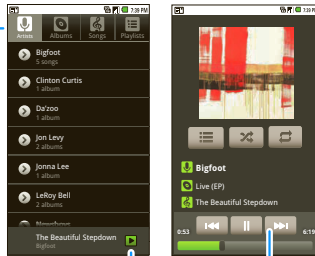
Music

when music is what you need...

Quick start: Music

Touch, touch, play—instant music. Just open your music library, then select what you want to play.


Find it:  >  **Music**



Categories
Touch to list & select songs or playlists.

Last Played
Touch to play again.

Music Controls

Tip: When a song is playing, you can add it to a playlist by touching Menu  > **Add to playlist**.

Set up music


What music transfer tools do I need?

To put music on your computer and then load it on your phone, you need:

- A Microsoft™ Windows™ PC or Apple™ Macintosh™
- A USB data cable.

You need a memory card

Your music is stored on your memory card. Your phone supports removable microSD memory cards. To make sure your memory card is installed, go to “Assemble & charge” on page 3.

Tip: To see the available memory on your memory card, touch Menu  > **Settings** > **SD card & phone storage**.

What music file formats can I play?

Your phone can play many types of files: AMR-NB/WB, MP3, PCM/WAV, AAC, AAC+, eAAC+, MIDI, OGG, and WMA.

Note: Your phone does not support DRM (digital rights management) protected files.


What headphones can I use?

Your phone has a 3.5mm headset jack for wired stereo listening. You can go wireless with Bluetooth® stereo headphones or speakers (see “Bluetooth® wireless” on page 37).

Get music

Transfer music using USB

Transfer music files from a computer to your memory card.

- 1 With a memory card inserted, and your phone showing the home screen, connect a Motorola micro USB data cable from your phone’s micro USB port to a USB port on your computer. Your phone should show  in the status bar.

Note: You may need to remove the USB data cable from the charger power head.

Note: Make sure to connect the phone to a high power USB port. Typically, these are located directly on your computer.

Note: Your phone supports Microsoft™ Windows™ XP, Windows Vista™, and Apple™ Macintosh™. Other operating systems may not be compatible.

- 2 Your phone shows a USB connection dialog, at the top of the screen. Flick down, then touch **USB**

connection. You can't use the files on your memory card while it is connected.

- 3 Touch **Mount** (if asked) to connect your memory card.
- 4 On your computer, locate and click on the "Removable Disk" icon to access the phone's memory card.
- 5 Drag and drop your music to a folder on the memory card.

Tip: To help manage your music, create a "Music" folder on your memory card.

- 6 When you're done, select the "Safely Remove Hardware" feature to on your computer. On your phone, drag down the notification panel (see "Phone status & notifications" on page 8), touch **Turn off USB storage**, and select **Turn off**.

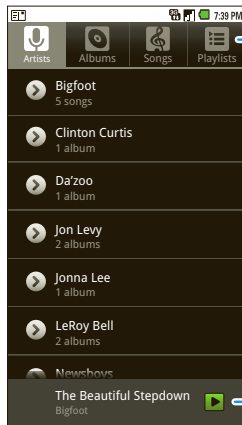
Tip: You can also use Windows Media Player to sync music from your PC to your phone. To download Windows Media Player, go to <http://www.microsoft.com/windowsmedia>.

Play music

Music library

Open your music library, then select what you want to play.

Find it:  >  **Music**




Categories

Touch to list songs or playlists.

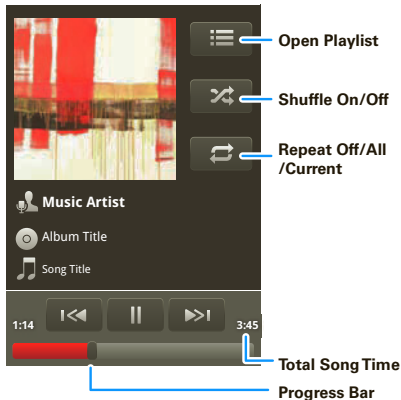
Last Played

Touch to play again.

Your music is stored by artists, albums, songs, and playlists. Touch a category, then touch the song or playlist you want to play. Touch Menu  > **Party shuffle** to randomly play all your songs.

Music player

Just touch a song or playlist to get going.



Music player controls

- **Play/pause**—Touch .
- **Previous/next**—Touch .
- **Fast forward/rewind**—Touch and hold .
- **View playlist**—Touch .

- **Shuffle**—Touch .
- **Repeat**—Touch .
- **Volume**—Press the side volume keys.
- **View library**—Touch Menu > **Library**.
- **Turn shuffle on/off**—Touch Menu > **Party shuffle**.
- **Add to playlist**—Touch Menu > **Add to playlist**.
- **Use as ringtone**—Touch Menu > **Use as ringtone**.
- **Delete**—Touch Menu > **Delete**.

Hide, wake, turn off

Touch Home to use another app. Your music continues to play.

When you see in the status bar, a song is playing, flick down to see details. Touch the song to return to the music controls.

To turn off your music touch .

Playlists

To add a song from the music library to a playlist, touch and hold the song then touch **Add to playlist**. Choose an existing playlist, or touch **New** to create a new playlist.

To add a song to the playlist you're playing, touch Menu  > **Add to playlist** in the music player.

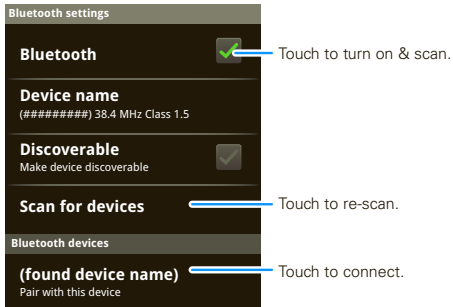
To edit, delete and rename playlists, touch and hold the playlist, in the music library.

Bluetooth® wireless

lose the wires and go wireless


Quick start: Bluetooth wireless

Find it: Menu  > **Settings** > **Wireless & networks** > **Bluetooth settings**



For more information about Bluetooth wireless connections supported by this device, go to <http://www.verizonwireless.com/bluetooth>.

Turn Bluetooth power on or off

Find it: Touch Menu  > **Settings** > **Wireless & networks** > **Bluetooth**.

Note: To extend battery life, turn Bluetooth power off when not in use.



Connect new devices

Note: This feature requires an optional accessory.

To connect with a new device, you need to pair with it. You only need to do this once for each device—to connect again, see “Reconnect devices” on page 38.

- 1 Make sure the device you are pairing with is in discoverable mode.

Note: Refer to the guide that came with the device for details.

- 2 Touch Menu  > **Settings** > **Wireless & networks** > **Bluetooth settings**.
- 3 Touch **Bluetooth** to turn on and scan. If Bluetooth power is already on, touch **Scan for devices**.
- 4 Touch a device to connect.
- 5 If necessary, touch **OK**, or enter the device passkey (like **0000**) to connect to the device. When the device is connected, the Bluetooth indicator  appears in the status bar.

Note: Using a mobile device or accessory while driving may cause distraction and may be illegal. Always obey the laws and drive safely.

Reconnect devices

To automatically reconnect your phone with a paired device, simply turn on the device.


To manually reconnect your phone with a paired device, touch the device name in the **Bluetooth devices** list.

Disconnect devices

To automatically disconnect your phone from a paired device, simply turn off the device.

To manually disconnect your phone from a paired device, touch the device name in the devices list, then touch Menu  > **Disconnect**.

Edit properties

To edit the device name, touch Menu  > **Settings** > **Wireless & networks** > **Bluetooth settings** > **Device name**. Enter a name and touch **OK**.

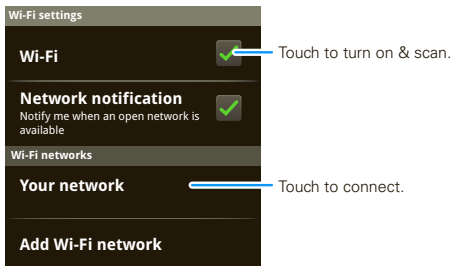
Wi-Fi®

home, office, or hotspot


Quick start: Wi-Fi

Find it: Menu  > **Settings** > **Wireless & networks** > **Wi-Fi settings**

Use a wireless network for fast Internet access and to download data.




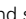


Turn Wi-Fi on or off

Find it: Menu  > **Settings** > **Wireless & networks** > **Wi-Fi**.

Note: To extend battery life, turn off Wi-Fi power when not in use.

Wi-Fi search & connect

To find networks in your range:

- 1 Touch Menu  > **Settings** > **Wireless & networks** > **Wi-Fi settings**.
- 2 Touch **Wi-Fi** to turn on and scan. If Wi-Fi power is already on, touch Menu  > **Scan**. Your phone lists the networks it finds within range.
Tip: To see your phone's MAC address or other Wi-Fi details, touch Menu  > **Advanced**.
- 3 Touch a network to connect.
- 4 If necessary, enter **Network SSID**, **Security**, and **Wireless password**, and touch **Connect**. When your phone is connected to the network, the wireless indicator  appears in the status bar.


Tip: When you are in range and Wi-Fi power is on, you will automatically reconnect to available networks you've connected to before.

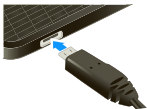
USB & memory card

connect your phone and computer, then drag & drop

USB drag & drop

You can transfer your pictures, videos, music, ringtones, and more, from your computer to your phone's memory card.

- 1 With a memory card inserted, and your phone showing the home screen, connect a Motorola micro USB data cable from your phone's micro USB port to a USB port on your computer. Your phone should show  in the status bar.



Note: You may need to remove the USB data cable from the charger power head.

Note: Make sure to connect the phone to a high power USB port. Typically, these are located directly on your computer.


- 2 Your phone shows a USB connection dialog, at the top of the screen. Flick down, then touch **USB connected**. You can't use the files on your memory card while it is connected.
- 3 Touch **Turn on USB storage** to connect your memory card.

- 4 On your computer, locate and click on the "Removable Disk" icon to access the phone's memory card.
- 5 Drag and drop your pictures, videos, music, ringtones, and more, to the phone folder on the memory card. To help manage your files, you can create more folders inside your phone folder.
- 6 When you're done, select the "Safely Remove Hardware" feature to on your computer. On your phone, drag down the notification panel (see "Phone status & notifications" on page 8), touch **Turn off USB storage**, and select **Turn off USB storage**.

Memory card

Note: You need to install the memory card to use your phone.

Remove or format your memory card

Before you remove or format your memory card you need to unmount it. Touch Menu  > **Settings** > **SD card & phone storage** > **Unmount SD card**.

To format your memory card, touch **Format SD card**.

Warning: All data on your memory card will be deleted.

Tools


stay on top of things

Alarm clock

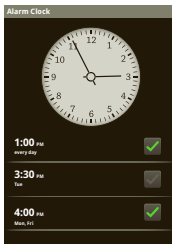
Find it:  >  **Alarm Clock**

To turn on an alarm, touch the check box.

When an alarm sounds, touch **Dismiss** to turn it off or **Snooze** to delay.



To add an alarm, touch Menu  > **Add alarm**, then enter alarm details.

To enable or disable an alarm, touch the check box.



Calculator

Find it:  >  **Calculator**

Your calculator has basic and advanced views. To change views, touch Menu  > **Advanced panel** or **Basic panel**. To clear history, touch Menu  > **Clear history**.

Management

stay in control

Wireless manager


Find it: Menu  > **Settings** > **Wireless & networks**

Manage all your wireless connections: Wi-Fi®, Bluetooth®, airplane mode, & mobile networks.

Airplane mode


Use airplane mode to turn all your wireless connections off—useful when flying.

Update my phone

To keep your phone current, software updates may be available. Touch Menu  > **Settings** > **About phone** > **System updates** to see if your phone is up to date. If it isn't, touch **Update**.

Network

You should not need to change any network settings. Contact your service provider for help.

Touch Menu  > **Settings** > **Wireless & networks** > **Mobile networks** to show options for roaming networks, network selection, operator selection, and access point names.

Security

help keep your phone safe

Quick start: Security


Find it: Menu  > **Settings** > **Location & security**





Screen lock


Note: You can make emergency calls on a locked phone (see “Emergency calls” on page 11). A locked phone still rings, **but you need to unlock it to answer.**

Lock the screen in the following ways:

- Press Power .
- Let the screen time out (don't press anything).
- Switch the power off.

To unlock the screen, press Power , or open the phone. Then, drag  to the right.

Set up screen lock

You can use any of three different methods to manually lock and unlock the screen—draw a screen unlock pattern, enter a numerical PIN, or enter a password. To select the lock method you want to use, touch Menu  > **Settings** > **Location & security** > **Set up screen lock.**

Forgot your pattern or password?

If you forget your pattern, PIN, or password, see your service provider.


Troubleshooting

we're here to help

Crash recovery

In the unlikely event that your phone stops responding to touches and key presses, try a quick reset. Remove the back cover and battery (“Assemble & charge” on page 3), then replace and switch your phone on as usual.

Reset

To reset your phone to factory settings and erase all the data on your phone, touch Menu  > **Settings** > **Privacy** > **Factory data reset** > **Reset phone**.

Warning: All data on your phone will be deleted.

Service & Repairs

If you have questions or need assistance, we're here to help.

Go to www.motorola.com/repair (United States) or www.motorola.com/support (Canada), where you can select from a number of customer care options. You can also contact the Motorola Customer Support Center at 1-800-734-5870 (United States - Android products), 1-800-331-6456 (United States - all other products), 1-888-390-6456 (TTY/TDD United States for hearing impaired - all products), or 1-800-461-4575 (Canada - all products).

Battery Use & Safety

Important: Handle and store batteries properly to avoid injury or damage.

Most battery issues arise from improper handling of batteries, and particularly from the continued use of damaged batteries.

DON'Ts

- **Don't disassemble, crush, puncture, shred, or otherwise attempt to change the form of your battery.**
- **Don't let the mobile device or battery come in contact with water.*** Water can get into the mobile device's circuits, leading to corrosion. If the mobile device and/or battery get wet, have them checked by your service provider or contact Motorola, even if they appear to be working properly.*
- **Don't allow the battery to touch metal objects.** If metal objects, such as jewelry, stay in prolonged contact with the battery contact points, the battery could become very hot.
- **Don't place your mobile device or battery near a heat source.*** Excessive heat can damage the mobile device or the battery. High temperatures can cause the battery to swell, leak, or malfunction. Therefore:
- **Don't dry a wet or damp battery with an appliance or heat source,** such as a hair dryer or microwave oven.

DOs

- **Do avoid leaving your mobile device in your car in high temperatures.***
- **Do avoid dropping the battery or mobile device.*** Dropping these items, especially on a hard surface, can potentially cause damage.*
- **Do contact your service provider or Motorola if your mobile device or battery has been damaged from dropping or high temperatures.**

* **Note:** Always make sure that the battery compartment is closed and secure to avoid direct exposure of the battery to any of these conditions.

Important: Use Motorola Original products for quality assurance and safeguards. To aid consumers in identifying authentic Motorola batteries from non-original or counterfeit batteries (that may not have adequate safety protection), Motorola provides holograms on its batteries. Consumers should confirm that any battery they purchase has a "Motorola Original" hologram.

Motorola recommends you always use Motorola-branded batteries and chargers. Motorola mobile devices are designed to work with Motorola batteries. If you see a message on your display such as **Invalid Battery** or **Unable to Charge**, take the following steps:

- Remove the battery and inspect it to confirm that it has a "Motorola Original" hologram;
- If there is no hologram, the battery is not a Motorola battery;
- If there is a hologram, replace the battery and try charging it again;
- If the message remains, contact a Motorola authorized service center.

Important: Motorola's warranty does not cover damage to the mobile device caused by non-Motorola batteries and/or chargers.

Warning: Use of a non-Motorola battery or charger may present a risk of fire, explosion, leakage, or other hazard.

Proper and safe battery disposal and recycling: Proper battery disposal is not only important for safety, it benefits the environment. Consumers may recycle their used batteries in many retail or service provider locations. Additional information on proper disposal and recycling may be found on the Web:

- www.motorola.com/recycling
- www.rbrc.org/call2recycle/ (in English only)

Disposal: Promptly dispose of used batteries in accordance with local regulations. Contact your local recycling center or national recycling organizations for more information on how to dispose of batteries.

Warning: Never dispose of batteries in a fire because they may explode.



Battery Charging

Notes for charging your product's battery:

- When charging your battery, keep it near room temperature. Never expose batteries to temperatures below 0°C (32°F) or above 45°C (113°F) when charging.
- New batteries are not fully charged.
- New batteries or batteries stored for a long time may take more time to charge.
- Motorola batteries and charging systems have circuitry that protects the battery from damage from overcharging.

Driving Precautions

Responsible and safe driving is your primary responsibility when behind the wheel of a vehicle. Using a mobile device or accessory for a call or other application while driving may cause distraction. Using a mobile device or accessory may be prohibited or restricted in certain areas, always obey the laws and regulations on the use of these products.

While driving, NEVER:

- Type or read texts.
- Enter or review written data.
- Surf the web.
- Input navigation information.
- Perform any other functions that divert your attention from driving.

While driving, ALWAYS:

- Keep your eyes on the road.
- Use a handsfree device if available or required by law in your area.
- Enter destination information into a navigation device **before** driving.
- Use voice activated features (such as voice dial) and speaking features (such as audible directions), if available.
- Obey all local laws and regulations for the use of mobile devices and accessories in the vehicle.
- End your call or other task if you cannot concentrate on driving.

Remember to follow the "Smart Practices While Driving" in this guide and at www.motorola.com/callsmart (in English only).

Seizures/Blackouts

Some people may be susceptible to epileptic seizures or blackouts when exposed to flashing lights, such as when playing videos or games. These may occur even if a person has never had a previous seizure or blackout.

If you have experienced seizures or blackouts, or if you have a family history of such occurrences, please consult with your physician before playing videos or games or enabling a flashing-lights feature (if available) on your mobile device. Discontinue use and consult a physician if any of the following symptoms occur: convulsion, eye or muscle twitching, loss of awareness, involuntary movements, or disorientation. It is always a good idea to hold the screen away from your eyes, leave the lights on in the room, take a 15-minute break every hour, and stop use if you are tired.

Caution About High Volume Usage

Warning: Exposure to loud noise from any source for extended periods of time may affect your hearing. The louder the volume sound level, the less time is required before your hearing could be affected.



To protect your hearing:

- Limit the amount of time you use headsets or headphones at high volume.
- Avoid turning up the volume to block out noisy surroundings.
- Turn the volume down if you can't hear people speaking near you.

If you experience hearing discomfort, including the sensation of pressure or fullness in your ears, ringing in your ears, or muffled speech, you should stop listening to the device through your headset or headphones and have your hearing checked.

For more information about hearing, see our Web site at direct.motorola.com/hellomoto/nss/AcousticSafety.asp (in English only).

Repetitive Motion

When you repetitively perform actions such as pressing keys or entering finger-written characters, you may experience occasional discomfort in your hands,

arms, shoulders, neck, or other parts of your body. If you continue to have discomfort during or after such use, stop use and see a physician.

[Nov0109]

Small Children

Keep your mobile device and its accessories away from small children.

These products are not toys and may be hazardous to small children. For example:

- A choking hazard may exist for small, detachable parts.
- Improper use could result in loud sounds, possibly causing hearing injury.
- Improperly handled batteries could overheat and cause a burn.

Glass Parts

Some parts of your mobile device may be made of glass. This glass could break if the product is dropped on a hard surface or receives a substantial impact. If glass breaks, do not touch or attempt to remove. Stop using your mobile device until the glass is replaced by a qualified service center.

Operational Warnings

Obey all posted signs when using mobile devices in public areas.







Potentially Explosive Atmospheres

Areas with potentially explosive atmospheres are often, but not always, posted and can include fueling areas, such as below decks on boats, fuel or chemical transfer or storage facilities, or areas where the air contains chemicals or particles, such as grain dust, or metal powders.

When you are in such an area, turn off your mobile device, and do not remove, install, or charge batteries. In such areas, sparks can occur and cause an explosion or fire.

Symbol Key

Your battery, charger, or mobile device may contain symbols, defined as follows:

Symbol	Definition
	Important safety information follows.
	Do not dispose of your battery or mobile device in a fire.
	Your battery or mobile device may require recycling in accordance with local laws. Contact your local regulatory authorities for more information.
	Do not dispose of your battery or mobile device with your household waste. See "Recycling" for more information.
	For indoor use only.
	Listening at full volume to music or voice through a headset may damage your hearing.

Radio Frequency (RF) Energy

Exposure to RF Energy

Your mobile device contains a transmitter and receiver. When it is ON, it receives and transmits RF energy. When you communicate with your mobile device, the system handling your call controls the power level at which your mobile device transmits.

Your mobile device is designed to comply with local regulatory requirements in your country concerning exposure of human beings to RF energy.

RF Energy Operational Precautions

For optimal mobile device performance, and to be sure that human exposure to RF energy does not exceed the guidelines set forth in the relevant standards, always follow these instructions and precautions:

- When placing or receiving a phone call, hold your mobile device just like you would a landline phone.
- If you wear the mobile device on your body, always place the mobile device in a Motorola-supplied or approved clip, holder, holster, case, or body harness. If you do not use a body-worn accessory supplied or approved by Motorola, keep the mobile device and its antenna at least 2.5 centimeters (1 inch) from your body when transmitting.
- Using accessories not supplied or approved by Motorola may cause your mobile device to exceed RF energy exposure guidelines. For a list of Motorola-supplied or approved accessories, visit our Web site at: www.motorola.com.

RF Energy Interference/Compatibility

Nearly every electronic device is subject to RF energy interference from external sources if inadequately shielded, designed, or otherwise configured for RF energy compatibility. In some circumstances, your mobile device may cause interference with other devices.

Follow Instructions to Avoid Interference Problems

Turn off your mobile device in any location where posted notices instruct you to do so.

In an aircraft, turn off your mobile device whenever instructed to do so by airline staff. If your mobile device offers an airplane mode or similar feature, consult airline staff about using it in flight.

Implantable Medical Devices

If you have an implantable medical device, such as a pacemaker or defibrillator, consult your physician before using this mobile device.

Persons with implantable medical devices should observe the following precautions:

- ALWAYS keep the mobile device more than 20 centimeters (8 inches) from the implantable medical device when the mobile device is turned ON.
- DO NOT carry the mobile device in the breast pocket.

- Use the ear opposite the implantable medical device to minimize the potential for interference.
- Turn OFF the mobile device immediately if you have any reason to suspect that interference is taking place.

Read and follow the directions from the manufacturer of your implantable medical device. If you have any questions about using your mobile device with your implantable medical device, consult your healthcare provider.

Specific Absorption Rate (IEEE)

Your model wireless phone meets the governmental requirements for exposure to radio waves.

Your mobile device is a radio transmitter and receiver. It is designed and manufactured to not exceed limits for exposure to radio frequency (RF) energy set by the Federal Communications Commission (FCC) of the U.S. Government and by the Canadian regulatory authorities. These limits are part of comprehensive guidelines and establish permitted levels of RF energy for the general population. The guidelines are based on standards that were developed by independent scientific organizations through periodic and thorough evaluation of scientific studies. The standards include a substantial safety margin designed for the safety of all persons, regardless of age or health, and to account for any variations in measurements. The exposure standard for mobile devices employs a unit of measurement known as the Specific Absorption Rate (SAR). The IEEE SAR limit set by the FCC and by the Canadian regulatory authorities is 1.6 watts per kilogram (W/kg), averaged over one gram of tissue. Tests for SAR are conducted using procedures accepted by the FCC and by Industry Canada with the mobile device transmitting at its highest certified power level in all tested frequencies. Although the SAR is determined at the highest certified power level, the actual SAR level of the mobile device while operating can be below the maximum value. This is because the mobile device is designed to operate at multiple power levels so as to use only the power required to reach the network. In general, the closer you are to a wireless base station, the lower the power output.

Before a mobile device is available for sale to the public in the U.S. and Canada, it must be tested and certified to the FCC and Industry Canada that it does not exceed

the limit established by each government for safe exposure. The tests are performed in positions and locations (e.g., at the ear and worn on the body) submitted to the FCC and available for review by Industry Canada. The highest SAR value for this mobile device when tested for use at the ear is 1.49 W/kg, and when worn on the body, as described in this guide, is 1.50 W/kg. Body-worn measurements can differ, depending upon available accessories and regulatory requirements. The SAR information includes the Motorola testing protocol, assessment procedure, and measurement uncertainty range for this product.

While there may be differences between the SAR levels of various mobile devices and at various positions, they meet the governmental requirements for safe exposure. Please note that improvements to this product model could cause differences in the SAR value for later products; in all cases, products are designed to be within the guidelines.

Additional information on SAR can be found on the Cellular Telecommunications & Internet Association (CTIA) Web site:

<http://www.phonefacts.net>

or the Canadian Wireless Telecommunications Association (CWTA) Web site:

<http://www.cwta.ca>

Information from the World Health Organization

"Present scientific information does not indicate the need for any special precautions for the use of mobile phones. If you are concerned, you may want to limit your own or your children's RF exposure by limiting the length of calls or by using handsfree devices to keep mobile phones away from your head and body."

Source: WHO Fact Sheet 193

Further information: <http://www.who.int/peh-emf>

FCC Notice to Users

The following statement applies to all products that have received FCC approval. Applicable products bear the FCC logo, and/or an FCC ID in the format FCC ID:xxxxxx on the product label.

Motorola has not approved any changes or modifications to this device by the user. Any changes or modifications could void the user's authority to operate the equipment. See 47 CFR Sec. 15.21.

This device complies with part 15 of the FCC Rules. Operation is subject to the following two conditions: (1) This device may not cause harmful interference, and (2) this device must accept any interference received, including interference that may cause undesired operation. See 47 CFR Sec. 15.19(3).

This equipment has been tested and found to comply with the limits for a Class B digital device, pursuant to part 15 of the FCC Rules. These limits are designed to provide reasonable protection against harmful interference in a residential installation. This equipment generates, uses and can radiate radio frequency energy and, if not installed and used in accordance with the instructions, may cause harmful interference to radio communications. However, there is no guarantee that interference will not occur in a particular installation. If this equipment does cause harmful interference to radio or television reception, which can be determined by turning the equipment off and on, the user is encouraged to try to correct the interference by one or more of the following measures:

- Reorient or relocate the receiving antenna.
- Increase the separation between the equipment and the receiver.
- Connect the equipment to an outlet on a circuit different from that to which the receiver is connected.
- Consult the dealer or an experienced radio/TV technician for help.

Industry Canada Notice to Users

Operation is subject to the following two conditions: (1) This device may not cause interference and (2) This device must accept any interference, including interference that may cause undesired operation of the device. See RSS-GEN 7.1.5. This Class B digital apparatus complies with Canadian ICES-003.

GPS & AGPS

Your mobile device can use *Global Positioning System* (GPS) signals for location-based applications. GPS uses satellites controlled by the U.S. government that are subject to changes implemented in accordance with the Department of Defense policy and the Federal Radio Navigation Plan. These changes may affect the performance of location technology on your mobile device.

Your mobile device can also use *Assisted Global Positioning System* (AGPS), which obtains information from the cellular network to improve GPS performance. AGPS uses your wireless service provider's network and therefore airtime, data charges, and/or additional charges may apply in accordance with your service plan. Contact your wireless service provider for details.

Your Location

Location-based information includes information that can be used to determine the approximate location of a mobile device. Mobile devices which are connected to a wireless network transmit location-based information. Devices enabled with GPS or AGPS technology also transmit location-based information. Additionally, if you use applications that require location-based information (e.g. driving directions), such applications transmit location-based information. This location-based information may be shared with third parties, including your wireless service provider, applications providers, Motorola, and other third parties providing services.

Emergency Calls

When you make an emergency call, the cellular network may activate the AGPS technology in your mobile device to tell the emergency responders your approximate location.

AGPS has limitations and **might not work in your area**. Therefore:

- Always tell the emergency responder your location to the best of your ability; and
- Remain on the phone for as long as the emergency responder instructs you.

Performance Tips

- Go outside and away from underground locations, covered vehicles, structures with metal or concrete roofs, tall buildings, and foliage. Indoor performance might improve if you move closer to windows, but some window sun shielding films can block satellite signals.

- Move away from radios, entertainment equipment, and other electronic devices.

Navigation

When using navigation features, note that mapping information, directions and other navigational data may contain inaccurate or incomplete data. In some countries, complete information may not be available. Therefore, you should visually confirm that the navigational instructions are consistent with what you see. All drivers should pay attention to road conditions, closures, traffic, and all other factors that may impact driving. Always obey posted road signs.

Smart Practices While Driving

Check the laws and regulations on the use of mobile devices and their accessories in the areas where you drive. Always obey them. The use of these devices may be prohibited or restricted in certain areas—for example, handsfree use only may be required. Go to www.motorola.com/callsmart (in English only) for more information.

Your mobile device lets you communicate by voice and data—almost anywhere, anytime, wherever wireless service is available and safe conditions allow. When driving a car, driving is your first responsibility. If you choose to use your mobile device while driving, remember the following tips:

- **Get to know your Motorola mobile device and its features such as speed dial, redial and voice dial.** If available, these features help you to place your call without taking your attention off the road.
- **When available, use a handsfree device.** If possible, add an additional layer of convenience to your mobile device with one of the many Motorola Original handsfree accessories available today.
- **Position your mobile device within easy reach.** Be able to access your mobile device without removing your eyes from the road. If you receive an incoming call at an inconvenient time, if possible, let your voicemail answer it for you.
- **Let the person you are speaking with know you are driving; if necessary, suspend the call in heavy traffic or hazardous weather conditions.** Rain, sleet, snow, ice, and even heavy traffic can be hazardous.

- **Do not take notes or look up phone numbers while driving.** Jotting down a “to do” list or going through your address book takes attention away from your primary responsibility—driving safely.
- **Dial sensibly and assess the traffic; if possible, place calls when your car is not moving or before pulling into traffic.** If you must make a call while moving, dial only a few numbers, check the road and your mirrors, then continue.
- **Do not engage in stressful or emotional conversations that may be distracting.** Make people you are talking with aware you are driving and suspend conversations that can divert your attention away from the road.
- **Use your mobile device to call for help.** Dial 911 or other local emergency number in the case of fire, traffic accident, or medical emergencies (wherever wireless phone service is available).
- **Use your mobile device to help others in emergencies.** If you see an auto accident, crime in progress, or other serious emergency where lives are in danger, call 911 or other local emergency number (wherever wireless phone service is available), as you would want others to do for you.
- **Call roadside assistance or a special non-emergency wireless assistance number when necessary.** If you see a broken-down vehicle posing no serious hazard, a broken traffic signal, a minor traffic accident where no one appears injured, or a vehicle you know to be stolen, call roadside assistance or other special non-emergency wireless number (wherever wireless phone service is available).
- **Secure Personal Information**—Your mobile device can store personal information in various locations including your SIM card, memory card, and phone memory. Be sure to remove or clear all personal information before you recycle, return, or give away your device. You can also backup your personal data to transfer to a new device.
Note: For information on how to backup or wipe data from your mobile device, go to www.motorola.com/support
- **Online accounts**—Some mobile devices provide a Motorola online account (such as MOTBLUR). Go to your account for information on how to manage the account, and how to use security features such as remote wipe and device location (where available).
- **Applications**—Install third party applications from trusted sources only. Applications can have access to private information such as call data, location details and network resources.
- **Location-based information**—Location-based information includes information that can be used to determine the approximate location of a mobile device. Mobile phones which are connected to a wireless network transmit location-based information. Devices enabled with GPS or AGPS technology also transmit location-based information. Additionally, if you use applications that require location-based information (e.g. driving directions), such applications transmit location-based information. This location-based information may be shared with third parties, including your wireless service provider, applications providers, Motorola, and other third parties providing services.
- **Other information your device may transmit**—Your device may also transmit testing and other diagnostic (including location-based) information, and other non-personal information to Motorola or other third-party servers. This information is used to help improve products and services offered by Motorola.

If you have further questions regarding how the use of your mobile device may impact your privacy or data security, please contact Motorola at privacy@motorola.com, or contact your service provider.

Privacy & Data Security

Motorola understands that privacy and data security are important to everyone. Because some features of your mobile device may affect your privacy or data security, please follow these recommendations to enhance protection of your information:

- **Monitor access**—Keep your mobile device with you and do not leave it where others may have unmonitored access. Lock your device’s keypad where this feature is available.
- **Keep software up to date**—If Motorola or a software/application vendor releases a patch or software fix for your mobile device that updates the device’s security, install it as soon as possible.

Use & Care

To care for your Motorola mobile device, please observe the following:



liquids

Don't expose your mobile device to water, rain, extreme humidity, sweat, or other liquids. If it does get wet, don't try to accelerate drying with the use of an oven or dryer, as this may damage the mobile device.



extreme heat or cold

Avoid temperatures below 0°C/32°F or above 45°C/113°F.



microwaves

Don't try to dry your mobile device in a microwave oven.



dust and dirt

Don't expose your mobile device to dust, dirt, sand, food, or other inappropriate materials.



cleaning solutions

To clean your mobile device, use only a dry soft cloth. Don't use alcohol or other cleaning solutions.



shock and vibration

Don't drop your mobile device.



protection

To help protect your mobile device, always make sure that the battery compartment and any connector covers are closed and secure.

Recycling

Mobile Devices & Accessories

Please do not dispose of mobile devices or electrical accessories (such as chargers, headsets, or batteries) with your household waste, or in a fire. These items should be disposed of in accordance with the national collection and recycling schemes operated by your local or regional authority. Alternatively, you may return unwanted mobile devices and electrical accessories to any Motorola Approved Service Center in your region. Details of Motorola approved national recycling schemes, and further information on Motorola recycling activities can be found at:

www.motorola.com/recycling

Packaging & Product Guides

Product packaging and product guides should only be disposed of in accordance with national collection and recycling requirements. Please contact your regional authorities for more details.

California Perchlorate Label

Some mobile phones use an internal, permanent backup battery on the printed circuit board that may contain very small amounts of perchlorate. In such cases, California law requires the following label:

Perchlorate Material – special handling may apply when the battery is recycled or disposed of. See www.dtsc.ca.gov/hazardouswaste/perchlorate
There is no special handling required by consumers.

Hearing Aid Compatibility with Mobile Phones

Some Motorola phones are measured for compatibility with hearing aids. If the box for your particular model has "Rated for Hearing Aids" printed on it, the following explanation applies.

When some mobile phones are used near some hearing devices (hearing aids and cochlear implants), users may detect a buzzing, humming, or whining noise. Some hearing devices are more immune than others to this interference noise, and phones also vary in the amount of interference they generate.

The wireless telephone industry has developed ratings for some of their mobile phones, to assist hearing device users in finding phones that may be compatible with their hearing devices. Not all phones have been rated. Phones that are rated have the rating on their box or a label on the box. To maintain the published Hearing Aid Compatibility (HAC) rating for this mobile phone, use only the original equipment battery model.

The ratings are not guarantees. Results will vary depending on the user's hearing device and hearing loss. If your hearing device happens to be vulnerable to interference, you may not be able to use a rated phone successfully. Trying out the phone with your hearing device is the best way to evaluate it for your personal needs.

M-Ratings: Phones rated M3 or M4 meet FCC requirements and are likely to generate less interference to hearing devices than phones that are not labeled. M4 is the better/higher of the two ratings.

T-Ratings: Phones rated T3 or T4 meet FCC requirements and are likely to be more usable with a hearing device's telecoil ("T Switch" or "Telephone Switch") than unrated phones. T4 is the better/higher of the two ratings. (Note that not all hearing devices have telecoils in them.)

Hearing devices may also be measured for immunity to this type of interference. Your hearing device manufacturer or hearing health professional may help you find results for your hearing device. The more immune your hearing aid is, the less likely you are to experience interference noise from mobile phones.

Software Copyright Notice

Motorola products may include copyrighted Motorola and third-party software stored in semiconductor memories or other media. Laws in the United States and other countries preserve for Motorola and third-party software providers certain exclusive rights for copyrighted software, such as the exclusive rights to distribute or reproduce the copyrighted software. Accordingly, any copyrighted software contained in Motorola products may not be modified, reverse-engineered, distributed, or reproduced in any manner to the extent allowed by law. Furthermore, the purchase of Motorola products shall not be deemed to grant either directly or by implication, estoppel, or otherwise, any license under the copyrights, patents, or patent applications of Motorola or any third-party software provider, except for the

normal, non-exclusive, royalty-free license to use that arises by operation of law in the sale of a product.

Content Copyright

The unauthorized copying of copyrighted materials is contrary to the provisions of the Copyright Laws of the United States and other countries. This device is intended solely for copying non-copyrighted materials, materials in which you own the copyright, or materials which you are authorized or legally permitted to copy. If you are uncertain about your right to copy any material, please contact your legal advisor.

Open Source Software Information

For instructions on how to obtain a copy of any source code being made publicly available by Motorola related to software used in this Motorola mobile device, you may send your request in writing to the address below. Please make sure that the request includes the model number and the software version number.

MOTOROLA MOBILITY, INC.

OSS Management

600 North US Hwy 45

Libertyville, IL 60048

USA

The Motorola website opensource.motorola.com also contains information regarding Motorola's use of open source.

Motorola has created the opensource.motorola.com website to serve as a portal for interaction with the software community-at-large.

To view additional information regarding licenses, acknowledgments and required copyright notices for open source packages used in this Motorola mobile device, please press Menu Key > **Settings** > **About Phone** > **Legal information** > **Open source licenses**. In addition, this Motorola device may include self-contained applications that present supplemental notices for open source packages used in those applications.

Export Law Assurances

This product is controlled under the export regulations of the United States of America and Canada. The Governments of the United States of America and Canada may restrict the exportation or re-exportation of this product to certain destinations. For further information contact the U.S. Department of Commerce or the Canadian Department of Foreign Affairs and International Trade.

Product Registration

Online Product Registration:

www.motorola.com/us/productregistration

Product registration is an important step toward enjoying your new Motorola product. Registering permits us to contact you for product or software updates and allows you to subscribe to updates on new products or special promotions. Registration is not required for warranty coverage.

Please retain your original dated sales receipt for your records. For warranty service of your Motorola Personal Communications Product you will need to provide a copy of your dated sales receipt to confirm warranty status. Thank you for choosing a Motorola product.

Motorola Limited Warranty for the United States and Canada

What Does this Warranty Cover?

Subject to the exclusions contained below, Motorola Mobility, Inc. warrants its mobile telephones ("Products"), Motorola-branded or certified accessories sold for use with these Products ("Accessories"), and Motorola software contained on CD-ROMs or other tangible media and sold for use with these Products ("Software") to be free from defects in materials and workmanship under normal consumer usage for the period(s) outlined below. This limited warranty is a consumer's exclusive remedy, and applies as follows to new Motorola Products, Accessories, and Software purchased by consumers in the United States or Canada, which are accompanied by this written warranty:

Products and Accessories

Products Covered	Length of Coverage
Products and Accessories as defined above, unless otherwise provided for below.	One (1) year from the date of purchase by the first consumer purchaser of the product unless otherwise provided for below.
Decorative Accessories and Cases. Decorative covers, bezels, PhoneWrap™ covers and cases.	Limited lifetime warranty for the lifetime of ownership by the first consumer purchaser of the product.
Monaural Headsets. Ear buds and boom headsets that transmit mono sound through a wired connection.	Limited lifetime warranty for the lifetime of ownership by the first consumer purchaser of the product.
Products and Accessories that are Repaired or Replaced.	The balance of the original warranty or for ninety (90) days from the date returned to the consumer, whichever is longer.

Exclusions (Products and Accessories)

Normal Wear and Tear. Periodic maintenance, repair and replacement of parts due to normal wear and tear are excluded from coverage.

Batteries. Only batteries whose fully charged capacity falls below 80% of their rated capacity and batteries that leak are covered by this limited warranty.

Abuse & Misuse. Defects or damage that result from: (a) improper operation, storage, misuse or abuse, accident or neglect, such as physical damage (cracks, scratches, etc.) to the surface of the product resulting from misuse; (b) contact with liquid, water, rain, extreme humidity or heavy perspiration, sand, dirt or the like, extreme heat, or food; (c) use of the Products or Accessories for commercial purposes or subjecting the Product or Accessory to abnormal usage or conditions; or (d) other acts which are not the fault of Motorola, are excluded from coverage.

Use of Non-Motorola Products and Accessories. Defects or damage that result from the use of non-Motorola branded or certified Products, Accessories, Software or other peripheral equipment are excluded from coverage.

Unauthorized Service or Modification. Defects or damages resulting from service, testing, adjustment, installation, maintenance, alteration, or modification in any way by someone other than Motorola, or its authorized service centers, are excluded from coverage.

Altered Products. Products or Accessories with (a) serial numbers or date tags that have been removed, altered or obliterated; (b) broken seals or that show evidence of tampering; (c) mismatched board serial numbers; or (d) nonconforming or non-Motorola housings, or parts, are excluded from coverage.

Communication Services. Defects, damages, or the failure of Products, Accessories or Software due to any communication service or signal you may subscribe to or use with the Products Accessories or Software is excluded from coverage.

Software

Products Covered	Length of Coverage
Software. Applies only to physical defects in the media that embodies the copy of the software (e.g. CD-ROM, or floppy disk).	Ninety (90) days from the date of purchase.

Exclusions (Software)

Software Embodied in Physical Media. No warranty is made that the software will meet your requirements or will work in combination with any hardware or software applications provided by third parties, that the operation of the software products will be uninterrupted or error free, or that all defects in the software products will be corrected.

Software NOT Embodied in Physical Media. Software that is not embodied in physical media (e.g. software that is downloaded from the Internet), is provided "as is" and without warranty.

Who is Covered?

This warranty extends only to the first consumer purchaser, and is not transferable.

What Will Motorola Do?

Motorola, at its option, will at no charge repair, replace or refund the purchase price of any Products, Accessories or Software that does not conform to this warranty. We may use functionally equivalent reconditioned/refurbished/pre-owned or new Products, Accessories or parts. No data, software or applications added to your Product, Accessory or Software, including but not limited to personal contacts, games and ringer tones, will be reinstalled. To avoid losing such data, software, and applications, please create a back up prior to requesting service.

How to Obtain Warranty Service or Other Information

USA	All Products, Accessories, and Software: 1-800-331-6456
Canada	All Products: 1-800-461-4575
TTY	1-888-390-6456

You will receive instructions on how to ship the Products, Accessories or Software, at your expense, to a Motorola Authorized Repair Center. To obtain service, you must include: (a) a copy of your receipt, bill of sale or other comparable proof of purchase; (b) a written description of the problem; (c) the name of your service provider, if applicable; (d) the name and location of the installation facility (if applicable) and, most importantly; (e) your address and telephone number.

What Other Limitations are There?

ANY IMPLIED WARRANTIES, INCLUDING WITHOUT LIMITATION THE IMPLIED WARRANTIES OF MERCHANTABILITY AND FITNESS FOR A PARTICULAR PURPOSE, SHALL BE LIMITED TO THE DURATION OF THIS LIMITED WARRANTY, OTHERWISE THE REPAIR, REPLACEMENT, OR REFUND AS PROVIDED UNDER THIS EXPRESS LIMITED WARRANTY IS THE EXCLUSIVE REMEDY OF THE CONSUMER, AND IS PROVIDED IN LIEU OF ALL OTHER WARRANTIES, EXPRESS OR IMPLIED. IN NO

EVENT SHALL MOTOROLA BE LIABLE, WHETHER IN CONTRACT OR TORT (INCLUDING NEGLIGENCE) FOR DAMAGES IN EXCESS OF THE PURCHASE PRICE OF THE PRODUCT, ACCESSORY OR SOFTWARE, OR FOR ANY INDIRECT, INCIDENTAL, SPECIAL OR CONSEQUENTIAL DAMAGES OF ANY KIND, OR LOSS OF REVENUE OR PROFITS, LOSS OF BUSINESS, LOSS OF INFORMATION OR DATA, SOFTWARE OR APPLICATIONS OR OTHER FINANCIAL LOSS ARISING OUT OF OR IN CONNECTION WITH THE ABILITY OR INABILITY TO USE THE PRODUCTS, ACCESSORIES OR SOFTWARE TO THE FULL EXTENT THESE DAMAGES MAY BE DISCLAIMED BY LAW.

Some states and jurisdictions do not allow the limitation or exclusion of incidental or consequential damages, or limitation on the length of an implied warranty, so the above limitations or exclusions may not apply to you. This warranty gives you specific legal rights, and you may also have other rights that vary from state to state or from one jurisdiction to another.

Copyright & Trademarks

Motorola Mobility, Inc.
Consumer Advocacy Office
600 N US Hwy 45
Libertyville, IL 60048
www.hellomoto.com

Note: Do not ship your product to the above address. If you need to return your product for repairs, replacement, or warranty service, please contact the Motorola Customer Support Center at:

1-800-734-5870 (United States - Android products)

1-800-331-6456 (United States - all other products)

1-888-390-6456 (TTY/TDD United States for hearing impaired - all products)

1-800-461-4575 (Canada - all products)

Certain features, services and applications are network dependent and may not be available in all areas; additional terms, conditions and/or charges may apply. Contact your service provider for details.

All features, functionality, and other product specifications, as well as the information contained in this guide, are based upon the latest available information and believed to be accurate at the time of printing. Motorola reserves the right to change or modify any information or specifications without notice or obligation.

MOTOROLA, the Stylized M Logo, MOTOBLUR and the MOTOBLUR logo are trademarks or registered trademarks of Motorola Trademark Holdings, LLC. The Bluetooth trademarks are owned by their proprietor and used by Motorola Mobility, Inc. under license. **WiFi** is a Certification Mark of the Wireless Fidelity Alliance, Inc. Java and all other Java-based marks are trademarks or registered trademarks of Sun Microsystems, Inc. in the U.S. and other countries. Google, YouTube, Picasa, Gmail, and the Google logo are trademarks of Google, Inc. Facebook is a registered trademark of Facebook, Inc. Microsoft, Windows, Windows Me, and Windows Vista are registered trademarks of Microsoft Corporation in the United States and other countries. Apple, Macintosh, Quicktime and Quicktime logo are registered trademarks of Apple Computer, Inc. DROID is a trademark of Lucasfilm Ltd. and its related companies. Used under license. All other product or service names are the property of their respective owners.

© 2010 Motorola Mobility, Inc. All rights reserved.

Caution: Changes or modifications made in the radio phone, not expressly approved by Motorola, will void the user's authority to operate the equipment.

Bluetooth ID: B015707

Manual Number: 68000202474-D

www.motorola.com

